



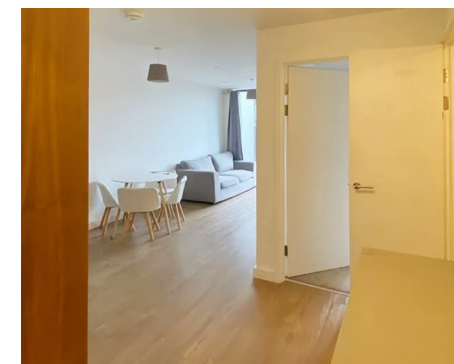
Let **UK** Home

1 Bedrooms

Flat

Located  
in Birmingham

£1,150 Per Month



[padmin@letukhome.co.uk](mailto:padmin@letukhome.co.uk)

<https://www.letukhome.co.uk/>

0121 828 8955



# 60 Sheepcote Street Birmingham

B16 8WH



Let UK Home are excited to offer this spectacular one bedroom apartment in the heart of The Bank Tower in Birmingham.

The apartments provide a full range of high-end services for residents, including concierge, a dedicated gym, a stylish residents' lounge and coffee bar, a shared dining area, secure entry with CCTV, and dedicated bicycle storage. A customised resident app connects you to all these convenient services, elevating the living experience to one of true luxury.

The development is surrounded by renowned schools and is close to the Birmingham university quarter. Within walking distance or a short bus ride are University College Birmingham, Aston University, and Birmingham City University, with the University of Birmingham also easily reachable. The area is home to 6 universities and 15 other institutions within a short drive, creating a rich academic atmosphere.

A wealth of dining options surrounds the project, with Chinatown just a stroll away for authentic Asian cuisine. The nearby Brindleyplace canal area and the Mailbox district are home to numerous restaurants, independent bars and specialty cafés, so you can enjoy leisurely moments right on your doorstep.

The Bank is situated in the heart of Birmingham's city center. As a 33-story residential skyscraper and iconic city landmark, it offers breathtaking views of Europe's most vibrant canal network and the urban skyline right from windows. Combined with the exclusive, private outdoor green spaces reserved for residents,

# 60 Sheepcote Street Birmingham

£1,150 Per Month



- Fully Furnished
- 24h Security
- Close to Bus Stations
- Private Residents-only Gym
- EPC Rating C
- Concierge Service
- Modern, Luxury, Building
- A Dedicated Bicycle Garage
- Communal Dining Area





Let **UK** Home

Let UK Home  
JQ Modern 120 Vyse St  
Birmingham  
B18 6NF

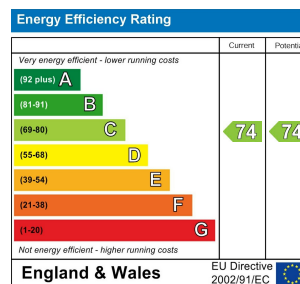
0121 828 8955

[pmadmin@letukhome.co.uk](mailto:pmadmin@letukhome.co.uk)

**Council Tax Band: C**

**Local Authority:**

Agents Note: Whilst every care has been taken to prepare these particulars, they are for guidance purposes only. All measurements are approximate and are for general guidance purposes only and whilst every care has been taken to ensure their accuracy, they should not be relied upon and potential buyers/tenants are advised to recheck the measurements.



<https://www.letukhome.co.uk/>